

CorrMagnet Consulting Inc.



interlace  
■ Connect ■ Collaborate ■ Innovate  
IT SOLUTION

# STEM\_Risk\_Pipeline™

## STEM\_Risk\_Pipeline™

- ▶ Is the “Digital Twin” of your pipelines.
- ▶ Is the one-stop solution to effectively and economically reduce the risk in pipelines.
- ▶ Analyzes the risk in pipelines; deduces strategies to reduce risk; and monitors implementation of risk reduction strategies.
- ▶ Ensures uninterrupted operations, cost savings, safe environment, and enhanced corporate reputation.
- ▶ Incorporates best practices which have progressively reduced the number of incidents in Canada from 4 per 1,000 km to 1 per 1,000 km of pipelines per year.
- ▶ Enables implementation of best practices in corrosion management based on NACE SP21430, “Standard Framework for Establishing Corrosion Management Systems”.

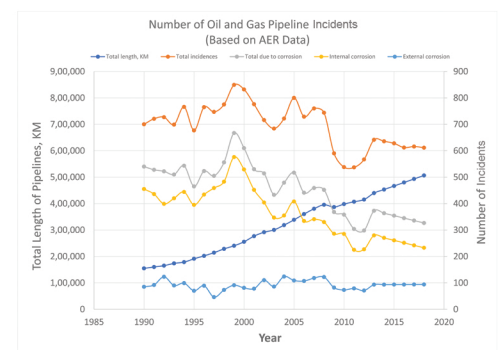
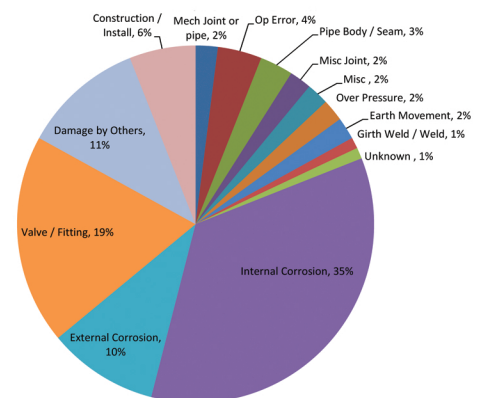
## STEM\_Risk\_Pipeline™ Uniqueness

- ▶ Integrates Science, Technology, Engineering and Management aspects of risk and risk control.
- ▶ Enables risk analysis of one pipeline at a time or whole pipeline network altogether.
- ▶ Includes industry benchmark scores for various Key Performance Indicators (KPI).
- ▶ Develops corrosion management as a stand alone system or integrates corrosion management system into the organization’s other management systems.
- ▶ Evaluates separately managerial aspects and scientific aspects of risk and risk control.

## STEM\_Risk\_Pipeline™ validation is based on

- ▶ Analysis of 100+ field data/experience.
- ▶ Evaluation of KPI used in the Oil and Gas pipelines in Argentina, Bahrain, Canada, Colombia, Ecuador, India, Saudi Arabia, USA, and Venezuela.
- ▶ Interaction with field personnel through courses, seminars, workshops, tutorials, and specific projects.

Pipeline Failure Causes  
Based on Alberta Energy Regulator (AER) data



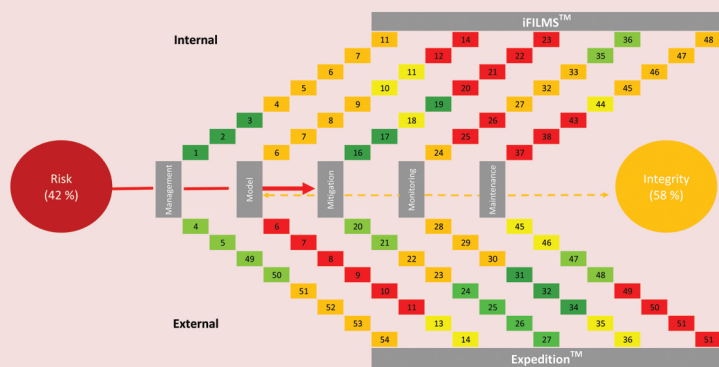
For more details

Web : [www.stemcorrosion.com](http://www.stemcorrosion.com) | Technical : [office@corrsmagnet.com](mailto:office@corrsmagnet.com) | Sales : [info@interlaceindia.com](mailto:info@interlaceindia.com)



## SCIENCE

- STEM\_Risk\_Pipeline™ investigates scientific aspects of internal corrosion (along with iFILMS™), external corrosion and stress corrosion cracking (along with Expedition™) and other risks.



## TECHNOLOGY

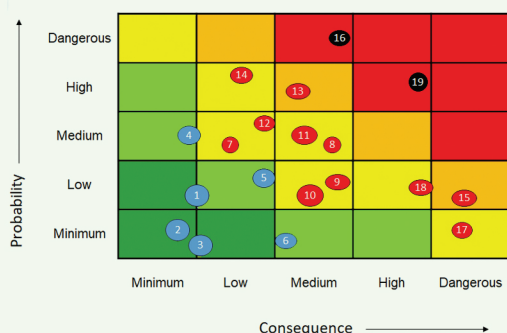
- STEM\_Risk\_Pipeline™ and its team enable digitization of data from any form (paper, CD, PDF, word processing etc) to electronic form thereby empowering the oil and gas pipeline owners/operators to make economical and efficient decision using all available data.



## ENGINEERING

- STEM\_Risk\_Pipeline™ is used in the conceptual, design, construction, operation, maintenance, decommission and abandonment stages.
- STEM\_Risk\_Pipeline™ is used to balance capital expenditure (Capex) and operational expenditure (Opex).

Risk Quantification (5 x 5 Matrix)



## MANAGEMENT

STEM\_Risk\_Pipeline™

- Investigates the status of risk and risk reduction activities in an individual pipeline or a group of pipelines in a field.
- Identifies areas / pipelines / flowlines with higher risk.
- Optimizes budget allocation.
- Enables seamless communication with regulators, stake holders, and general public.

